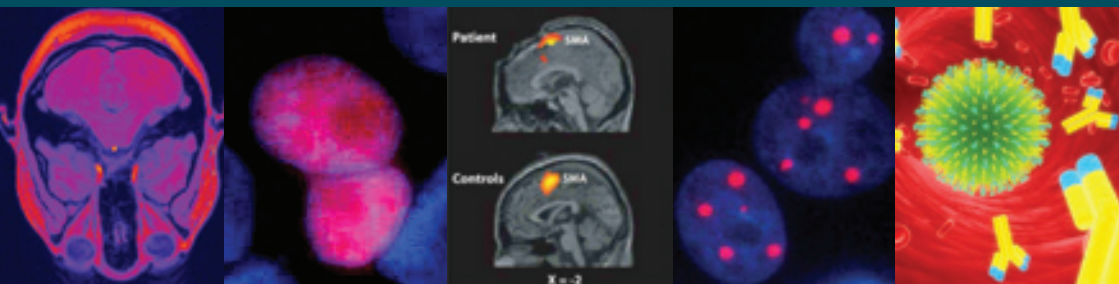


Brighton and Sussex Medical Research Networks

Connect, collaborate, innovate



Fostering collaboration between clinical
and scientific researchers in the region

Sponsored by the Regional Development Office
Research and Enterprise, University of Sussex

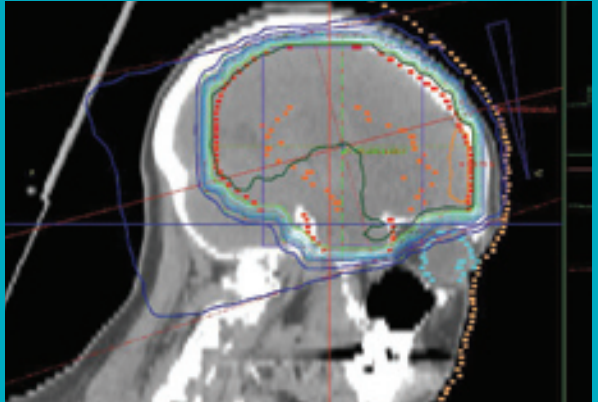
‘It’s vital to build synergistic relationships between universities and the National Health Service; researchers must play a central part in the local health economy.’

Professor Jonathan Cohen, Dean of BSMS

The Brighton and Sussex Medical Research Networks were created to support the strategic thrust of the Brighton and Sussex Medical School (BSMS) research programme. They bring senior academics and clinicians together to enhance translational research in the region. Members for the four networks are drawn from the BSMS, the University of Sussex and the Brighton and Sussex University Hospitals NHS Trust (BSUH NHS).

Meetings are termly by invitation only, alternating between the University of Sussex campus and the Royal Sussex County Hospital. We aim to create a relaxed, friendly environment with refreshments, where colleagues can meet and engage in stimulating academic discussions. We hope members will build collaborative relationships between local health organisations, sharing knowledge and creating opportunities for new research projects and new funding.

The networks also offer a perfect opportunity to make contact with the University of Sussex Regional Development Office (RDO). The RDO works to facilitate academic collaboration, to build new funding opportunities and to promote knowledge exchange within the region and beyond. Staff can advise you on reaching out to external organisations and showcasing your research.



Cancer Research Group

led by Dr Anthony Chalmers, Senior Lecturer (Honorary Consultant) in Clinical Oncology, joint University of Sussex and BSMS

Established June 2006, this has been a successful model for the other networks

Areas for discussion have included:

- Genome damage and stability
- Pharmaceutical and biomolecular science
- Psychosocial oncology – issues in treatment communication and follow-up
- Cancer Tissue Banks
- Genomics and proteomics

These meetings have already resulted in the creation of collaborative research groups, including:

Proteomics of hereditary non-polyposis colon cancer
(Anthony Chalmers, Stuart Cairns, Lucas Bowler)

Imaging surveillance of early prostate cancer
(Paul Tofts, Angus Robinson, Jonathan Richenberg)

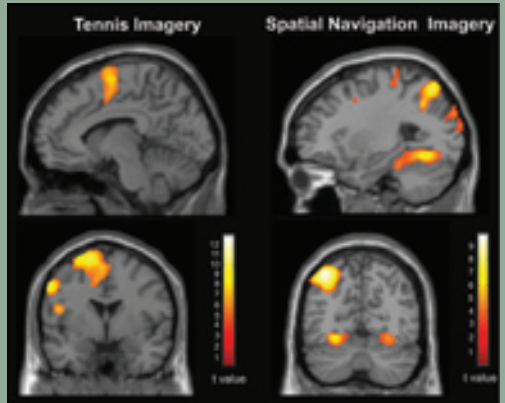
DNA Repair function in haematological cancers
(Tim Chevassut, Penny Jeggo, Mark O'Driscoll)

Overcoming chemotherapy resistance in malignant brain tumours
(Anthony Chalmers, Simon Morley)

Investigating the roles of Aurora and Survivin in leukaemic cells
(Sally Wheatley, Tim Chevassut)

‘I have been delighted by the continuing popularity of these events. Every meeting is different and the interactions between clinicians and scientists have been productive and highly sociable.’ Anthony Chalmers

See www.sussex.ac.uk/business/cancer for the next meeting date



Neuroscience Research Network

led by Professor Hugo Critchley, Chair in Psychiatry (Clinical Medicine), BSMS and Dr Hector Rojas, Research Coordinator, BSUH NHS Trust

Established in November 2007

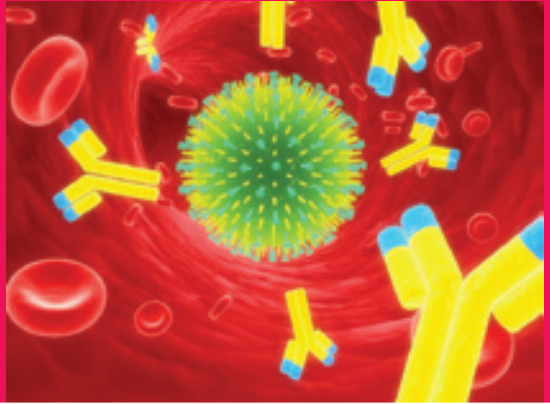
Areas of discussion have included:

- Cross-disciplinary applications of neuroscience
- Neurobiology
- Consciousness, mind and brain
- Neuroprotective, anti-neuroinflammatory mediators

The image at the top of the page comes from research by medical students at CISC (Clinical Imaging Sciences Centre) demonstrating conscious awareness through imagery.

‘These meetings will help unlock the potential of our universities to engage in translational research in clinical neuroscience.’ Hector Rojas

See www.sussex.ac.uk/business/neuroscience for the next meeting date



Infection and Immunology Research Network

led by Professor Florian Kern, Foundation Chair in Immunology, BSMS and Dr Melanie Newport, Reader (Honorary Consultant) in Infectious Diseases & International Health, BSMS

New in October 2008

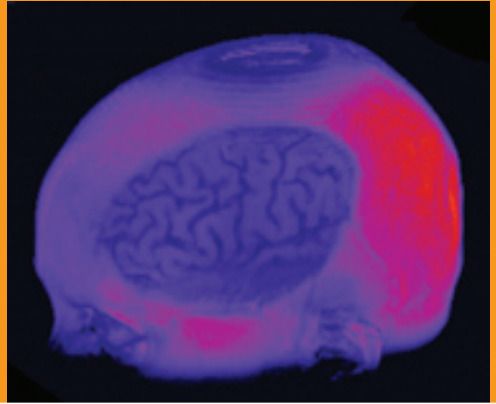
Topics for the inaugural meeting included:

- Why are my patients getting sicker?
- Molecular mechanisms of sepsis

‘The meeting was very well received. It was an excellent start and we are looking forward to the next event.’

Florian Kern and Melanie Newport

See www.sussex.ac.uk/business/immune for the next meeting date



Imaging Research Network

led by Professor Paul Tofts, Chair of Imaging Physics (Clinical and Laboratory Investigation), BSMS

New in November 2008

Clinicians meet with academics from the schools of engineering, informatics, medicine, psychology, physics and astronomy to present their work and discuss collaborations. There are also plans to run methodological sessions, for mutual teaching of unfamiliar techniques.

Topics include:

- Inflammation and changes in brain function
- fMRI of pain processes
- Prospective brain imaging research
- Voxel-based morphometry of the human brain in health and neurological diseases

See www.sussex.ac.uk/business/imaging for the next meeting date

Getting in touch

Do you have an idea for a discussion topic?

Would you like to present?

Is there a colleague or contact that should be invited?

Do you need information on previous meetings?

Do you have questions for the network leads?

Or to find out more about how the Regional Development Office can support your research

Call Deborah McGuchan, Business Development Manager (Life Sciences and the Medical School), on 01273 877800 or email: deborah.mcguchan@sussex.ac.uk

For other enquiries for the Regional Development Office: business@sussex.ac.uk

Online resources

Find out more about research at the BSMS at www.bsms.ac.uk/research

Find out more about research in Life Sciences at the University of Sussex at www.sussex.ac.uk/about/research/lifesci.php

General information on the networks at www.sussex.ac.uk/business/medical

The RDO website is at www.sussex.ac.uk/business

Regional Development Office
Ashdown House
Science Park Square
University of Sussex
Falmer
Brighton BN1 9SB
United Kingdom
T 01273 877 800



University of Sussex