

# SimNet 2026: Multi-Professional Simulation Conference (South East)



# SimNet

## Conference Brochure 2026

Thursday 25 June 2026

8am-5pm

Jubilee Building

Arts Road

University of Sussex

Brighton

BN1 9SL



# Simulation in Clinical Practice

PGCert

Learn, lead and deliver real impact in simulation-based education



Become a leader in simulation-based learning, with the skills and knowledge to transform clinical education and improve patient care.

[bsms.ac.uk/simulation-in-clinical-practice](https://bsms.ac.uk/simulation-in-clinical-practice)

Welcome

## SimNet Conference 2026: The Power of Simulation in a New NHS Era



Welcome to the SimNet Conference 2026. We are delighted to welcome delegates from across healthcare, higher education and the wider simulation community.

SimNet provides an important multi-professional forum bringing together clinicians, educators, researchers, simulation faculty, simulation technicians and industry partners to explore emerging methodologies, technologies and approaches that support safer patient care.

Through keynote presentations, workshops, and multi-professional oral presentations, delegates will have opportunities to engage in discussion, share innovation and consider the evolving role of simulation in healthcare education and professional practice.

This year's conference showcases a diverse range of simulation methodologies and interdisciplinary practice, including high and low fidelity simulation, AI-assisted clinical skills assessment, immersive AR/MR technologies, patient-specific 3D printed models, surgical simulation, neurodiversity, empathy in practice and faculty development.

Delegates are also invited to explore the digital poster presentations throughout the conference and contribute comments in support of the conference poster awards. Raffle tickets will be on sale during the day in support of Rockinghorse Children's Charity, helping to raise funds for local children's health services. A range of wellbeing activities will also feature throughout the conference to support networking, reflection and delegate wellbeing.

We hope you enjoy a day of shared professional learning, collaboration and innovation.

A handwritten signature in black ink that reads "J. I. Knight". The signature is written in a cursive style with a large, sweeping flourish at the end.

**Dr Jackie Knight**

Planning Group Lead, SimNet Conference 2026 (BSMS/NHS England SE)

## Conference Aims

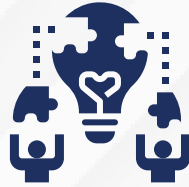
The aim of the conference is to provide a platform for simulationists in the region and beyond to:



Gather together



Learn from and with expert keynote speakers



Learn from and with each other



Be informed with updates from commercial providers

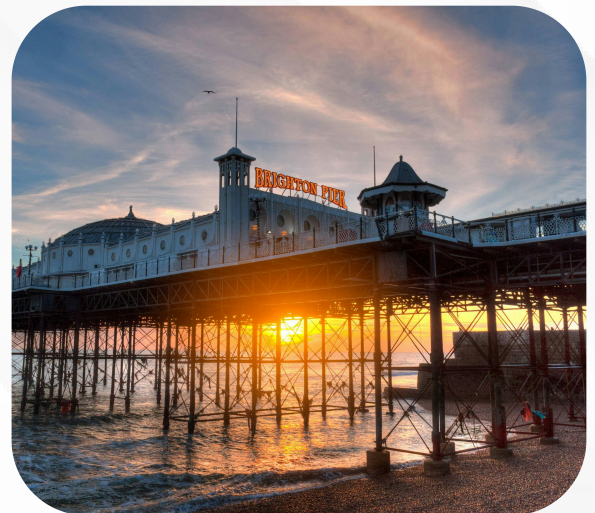


Network and find new collaborations

## Conference Objectives

The objectives of the conference are to:

- Provide an update on simulation faculty development, aligned with the national agenda.
- Showcase South East regional and wider simulation initiatives and highlight examples of best practice.
- Foster collaboration and partnership working through interactive workshops and structured networking opportunities.
- Celebrate excellence in simulation across the region by sharing and recognising showcased work.
- Inspire greater engagement in simulation at both local and national levels.



HOSTED BY BSMS AND THE UNIVERSITY OF SUSSEX

## Stay In Touch

[simulation@bsms.ac.uk](mailto:simulation@bsms.ac.uk)

[simnet\\_26](#)



### PARKING

Delegates can park for free in the multi-storey car park situated just behind our venue. You will receive a link to register your vehicle details prior to the event. A map and driving guidance can be found on the next page.



### BY TRAIN

You can reach the University of Sussex directly from Brighton Station and Lewes Station. Falmer Station is directly opposite the campus. You can walk to the campus from the station through a subway under the A27. Follow signs for the University of Sussex (the University of Brighton also has a campus at Falmer).

You can get from Brighton to Falmer in nine minutes by train. Four trains an hour go to Falmer during the day. If you are travelling from London and the west, take a train to Brighton and change there for Falmer.

The journey time from London to Brighton is just under an hour. You can also change at Lewes for Falmer, if you are coming from the east.



### BY BUS

The 23, 25, 25X, 28, 29, 701 and 3X buses run between the centre of Brighton and the campus.

Travel time between the campus and Brighton is about 20 minutes.

See Brighton & Hove buses ([buses.co.uk](http://buses.co.uk)) for detailed route information.

Please familiarise yourself with the route you would like to take, so you have a safe and smooth journey ahead.



### BY CYCLE

If you're a cyclist, you can benefit from purpose-built bike lanes along Lewes Road connecting the University to the centre of Brighton.

It takes about 25 minutes to cycle to the campus and there is plenty of bike parking.

## WHERE TO STAY



**Leonardo Hotel** - Delegates can benefit from a conference rate at Leonardo Hotel Brighton - this is subject to availability so book early to secure your stay. Please email the SimNet team to take advantage of this deal.



**Maldron Hotel Brighton** - Use the promo code UNISX for discounted rates.



**Queens Hotel & Spa** - Use the promo code UNI for discounted rates.

## WI-FI



Eduroam is available to those with existing access. Alternatively, conference WIFI details will be shared on the day.

## How to find us

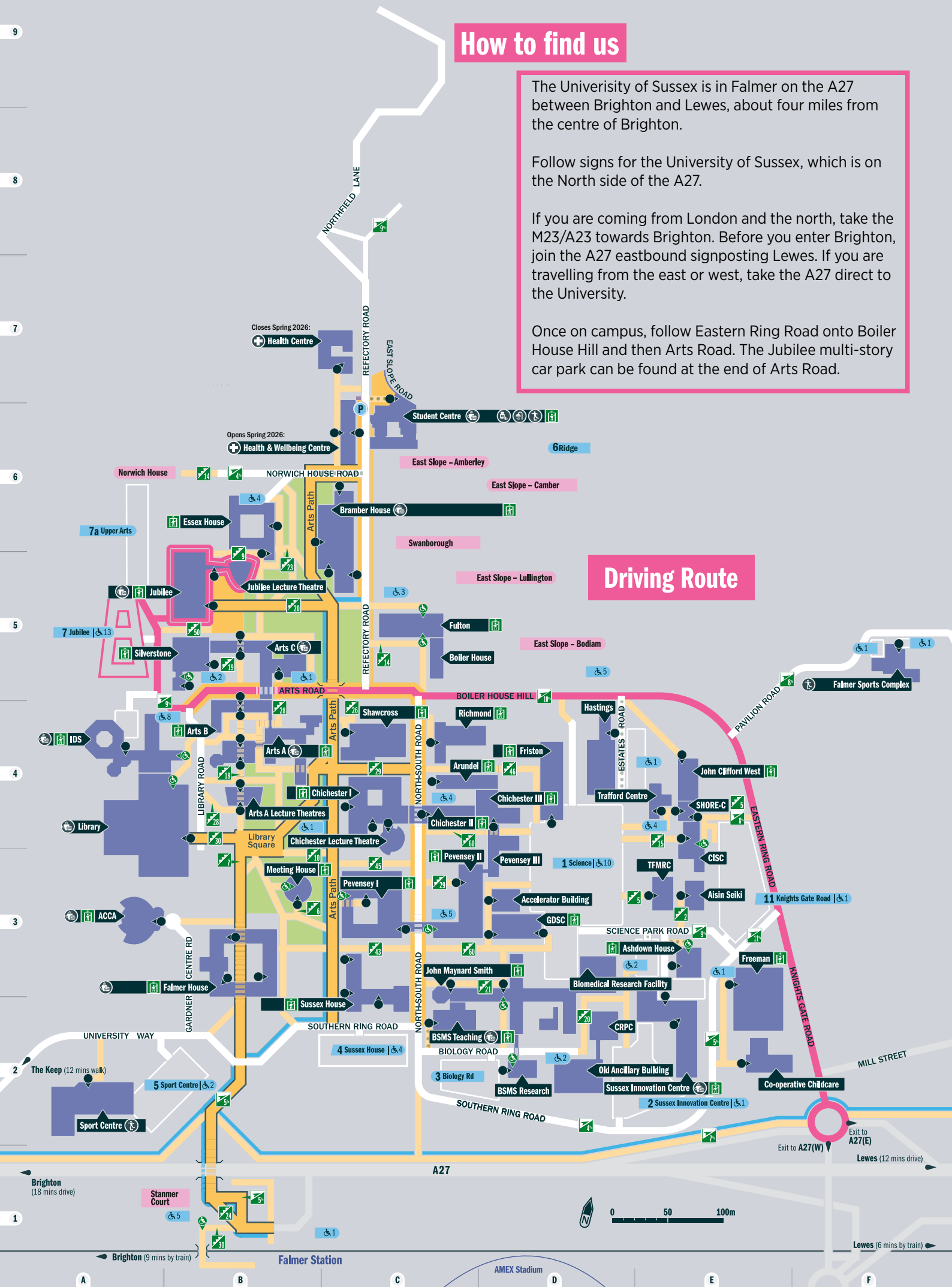
The University of Sussex is in Falmer on the A27 between Brighton and Lewes, about four miles from the centre of Brighton.

Follow signs for the University of Sussex, which is on the North side of the A27.

If you are coming from London and the north, take the M23/A23 towards Brighton. Before you enter Brighton, join the A27 eastbound signposting Lewes. If you are travelling from the east or west, take the A27 direct to the University.

Once on campus, follow Eastern Ring Road onto Boiler House Hill and then Arts Road. The Jubilee multi-story car park can be found at the end of Arts Road.

## Driving Route

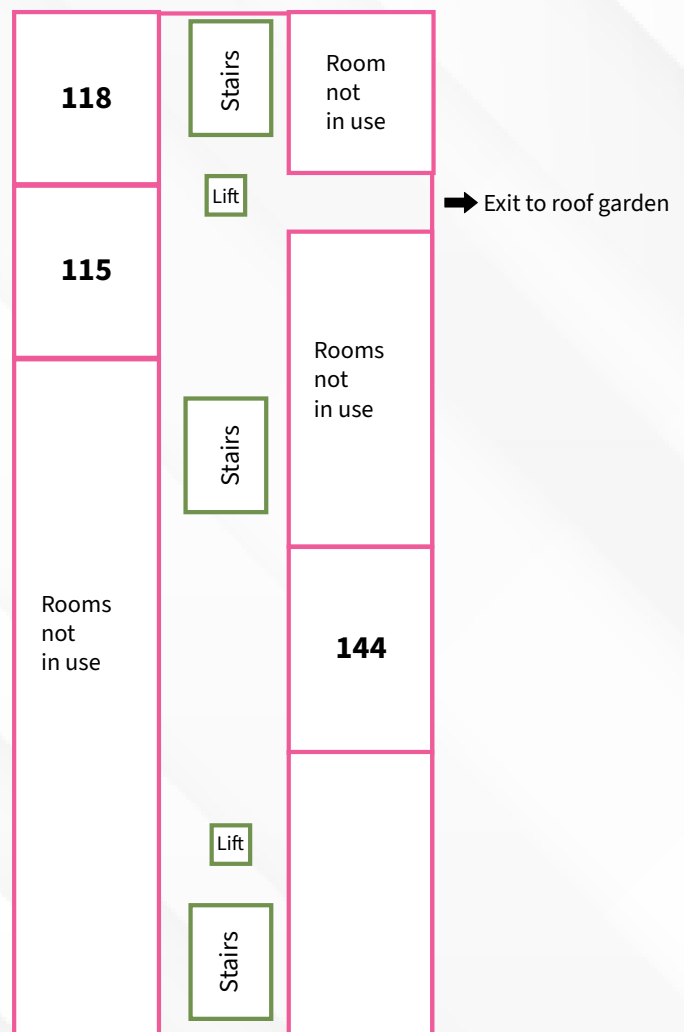


# FLOORPLANS

## Ground Floor



## First Floor



## Exhibitors

1. Rockinghorse
  2. Scotia
  3. Sim & Skills
  4. 3B Scientific
  5. iRis
  6. BSMS
  7. Limbs and Things
  8. Oxford Medical Simulation
  9. Medical Simulation Solutions
  10. Adam Rouilly
- G22. The Conference Zone**

PROGRAMME

Time	Event	Presenter	Room
<b>8:00 - 9:00</b>	Registration, networking, and morning refreshments		Entrance Hall
<b>9:00 - 9:30</b>	Welcome and opening	Dr Jackie Knight Dr Helen Higham Prof. Gordon Ferns Prof. Michael Okorie	Jubilee Lecture Theatre
<b>9:30-10:00</b>	Keynote talk	Prof. Sharon Weldon	Jubilee Lecture Theatre
<b>10:00 - 10:30</b>	<b>BREAK</b> Refreshments, networking and poster viewing		<b>Atrium</b> <b>Posters G22</b>
<b>10:30-11:30 Workshops</b>			
<b>11:30 - 11:45</b>	<b>Comfort break</b>		
<b>11:45-12:45 Workshops</b>			
<b>12:45 - 13:45</b>	<b>Lunch, networking and poster viewing</b>		<b>Atrium</b> <b>Posters G22</b>
<b>13:45 - 14:30</b>	Wellbeing activities and networking		G35, Atrium, Roof Garden
<b>14:30 - 15:00</b>	Keynote talk	Dr Jane Roome	Jubilee Lecture Theatre
<b>15:00-16:00 Workshops</b>			
<b>16:00 - 16:10</b>	<b>Comfort break and move to lecture theatre</b>		
<b>16:10 - 16:45</b>	Expert Panel - poster prizes	Dr Jackie Knight Rosie Courtney	Jubilee Lecture Theatre
<b>16:45 - 17:00</b>	Closing remarks	Dr Helen Higham	Jubilee Lecture Theatre
<b>17:00</b>	<b>Drinks reception</b>		<b>Atrium and Roof Garden</b>

WORKSHOPS

Time	Title	Facilitators	Room
<b>Session 1</b> <b>10:30-11:30</b>	Leading Multiprofessional Curriculum Change Through Simulation and Digital Innovation: The BSMS Offer	<b>Dr Ceri Butler, BSMS</b>	<b>G31</b>
	Using AI to Assess Clinical Skills: A Practical Introduction to Automated OSCE Evaluation	<b>Dr George Ryan</b>	<b>G36</b>
	Walking in Someone Else's Shoes: Exploring the Challenges of Everyday Healthcare Through the use of Empathy Suits	<b>Dr Jane Roome, Sue Clarke, Dr Manjiri Bodhe and the KSS Primary Care Simulation Faculty</b>	<b>115</b>
	Oral Presentations	<b>See next page for details</b>	<b>118</b>
	Oral Presentations	<b>See next page for details</b>	<b>144</b>
<b>Session 2</b> <b>11:45-12:45</b>	Beyond Assumptions: Building Bridges in NHS Communication	<b>Dr Signe Hassan and KSS Primary Care Simulation Faculty</b>	<b>G31</b>
	Low-Fidelity, High Impact Approach: Showcasing Table-top Simulation as an Accessible, Scalable MTD Teaching Method	<b>Sarah Glass, Sarah Brennan, Abi Graves-Cooper and Dagmar Ludewig Sussex Community NHS Trust</b>	<b>G36</b>
	Walking in Someone Else's Shoes: Exploring the Challenges of Everyday Healthcare Through the use of Empathy Suits	<b>Dr Jane Roome, Sue Clarke, Dr Manjiri Bodhe and the KSS Primary Care Simulation Faculty</b>	<b>115</b>
	Beyond the Theatre: International AR/MR Orthopaedic Simulation Using HoloLens and Patient-Specific 3D Printed Models	<b>Mr Georgios Arealis</b>	<b>118</b>
	Oral Presentations	<b>See next page for details</b>	<b>144</b>
<b>Session 3</b> <b>15:00-16:00</b>	Towards Neurodiversity-Inclusive Simulation: INCLUDE Framework and 5P Toolkit	<b>Dr Simran Singh, with Facilitators from Medway NHS Foundation Trust: Matthew Taiano, Manisha Shah, Ashike Choudhury</b>	<b>G31</b>
	Simulation Based Education in Surgery	<b>Dr Helen Higham, Johanna Thomas, Patrick Garfjeld-Roberts, Luke Solomons</b>	<b>G36</b>
	Oral Presentations	<b>See next page for details</b>	<b>115</b>
	Beyond the Theatre: International AR/MR Orthopaedic Simulation Using HoloLens and Patient-Specific 3D Printed Models	<b>Mr Georgios Arealis</b>	<b>118</b>
	Oral Presentations	<b>See next page for details</b>	<b>144</b>

ORAL PRESENTATIONS

Time	Title	Authors	Room
<b>Session 1</b> <b>10:30-11:30</b>	Medication Management Simulation for Final-Year Adult Nursing Students and in 2026 Working with Pharmacy Students	Jamie Cooper, Rebecca Craig, Dr Konnie Basu University of Brighton	<b>118</b>
	Scaling Up Immersive Technology in Medical and Surgical Training: Our Roadmap to 10,000 Immersive Experiences in 2026	Muntaha Uddin, Arooba Ali VRiMS WinS	
	You've Been Summoned: Preparing Healthcare Professionals for Coroner's Court Through Simulation	Kathryn Proudfoot, Megan Barker, Jodie Askew, Julie Turner University Hospitals Sussex NHSFT	
	The Effectiveness of Immersive Simulation on Nurses' Recognition and Management of the Deteriorating Patient	Lyndsay Habberfield, Tom Ward University Hospitals Sussex NHSFT	
<b>Session 1</b> <b>10:30-11:30</b>	Training Together: An Interprofessional (IP) Approach to Undergraduate Simulation	Dr Maddie Runagall, Rachel Whitmore RN East Sussex Healthcare NHS Trust	<b>144</b>
	Use of Extended Reality Tools: A Substitute or an Adjunct for Conventional Anatomy Teaching?	Haitham Ahmed, Dr Sadia Khan University of Nottingham	
	Crisis in the Chair: In-Situ Simulation for Human Factors in Maxillofacial MDTs	Shehryar Palijo, Bushra Bashir, Victoria Gray East Kent Hospitals University NHSFT	
	Disseminating Learning from a Critical Incident Through the Establishment of an In-Situ Simulation Educational Programme	Sophie C Ragbourne, A Fletcher, N Gavin Queen Victoria Hospital	
<b>Session 2</b> <b>11:45-12:45</b>	Surgical Skill Development through High-Tech Simulation-Based Constructivist Learning	Dr Ibrahim Elsherbini Surgical Registrar Conquest Hospital, East Sussex Healthcare NHS Trust	<b>144</b>
	Evaluation of Simulation-Based Education to Improve Medical Documentation for Early Clinical Medical Students	Dr Shivani Mahapatra Dr Megan Battenfield Nottingham University Hospitals, Nottingham Medical School, Trent Simulation Centre	
	Feasibility and Agreement Evaluation of an AI-Based Clinical Skills Assessment Platform in a Simulated OSCE Setting	Mr George Ryan, Professor Olwyn Westwood, Professor Joy Conway, Prof. Rakesh Patel	
	Palliative Simulation for Resident Doctors: Improving Emotional Preparedness, Cultural Sensitivity, and Core Clinical Skills	Dr Hussain Mahmood Palliative and General Internal Medicine, London and KSS Trainee	

ORAL PRESENTATIONS

Time	Title	Authors	Room
<b>Session 3</b> <b>15:00-16:00</b>	Bringing Expert GP Consulting to Life: Evaluation of a Live Clinical Experience (LCE) Pilot within KSS GP Specialty Training	Dr Nick Harvey, Dr Raya Al-Jawaheri, Dr Pavan Uppal, Dr Liz Norris KSS Primary Care Department and Educators' Faculty	<b>144</b>
	Practicality and Value of In-Situ Simulation in a Tertiary Hospital Setting: A Scalable Model for Education and System Improvement	Dr Josephine Valsa Jose, Dr Sugeeth Joseph Queen Elizabeth the Queen Mother Hospital, Margate, East Kent Hospitals University NHSFT	
	Virtual On-Call Simulation to Enhance Student Preparedness for Foundation Years	Dr Oyeronke Oyerinde, Dr Beth Asante, East Sussex Healthcare NHS Trust	
	Trauma Informed Birth Simulation	Dr Natalie Crawford, Wessex Dr Elinor Carlisle, Salisbury District General Hospital, Salisbury NHSFT	
<b>Session 3</b> <b>15:00-16:00</b>	Blending Innovation and Realism: A Meta-Analysis of Virtual Reality and Traditional Healthcare Simulation	Jasmine Ann Jacob, Zoë Melham Dartford and Gravesham NHS Trust	<b>115</b>
	Enhancing Urgent Care Education: Integrating Simulation-Based Education (SBE) in a Level 7 Minor Injury Module	Will Hall, Learning and Development Lead, Oxford Health NHS Foundation Trust Dr. Jackie Knight, Dr Chris Kowalksi, Merry Patel	
	Top Triage: A Simulation Based Gamified Approach to Improving GP Registrar Confidence in Remote Consulting and Clinical Prioritisation	Dr Rosie Byars, Dr Richard Davies	
	The Delivery of Simulation-Based Education to Allied Health Professionals to Help Protect Vulnerable Patients	Rebecca Newton, Jasmine Jacob, Zoë Melham Dartford and Gravesham NHS Trust	

## Sharon Weldon

Professor Sharon Weldon is an internationally renowned Professor of Healthcare Simulation and Workforce Development. She leads the Centre for Professional Workforce Development and the Simulation Group, and is Associate Head for Research and Knowledge Exchange in the School of Health Sciences within the University of Greenwich. She holds honorary positions with Imperial College London and Barts Health NHS Trust, collaborating on research and inputting on their programmes. Sharon is also a registered general nurse with experience in emergency and trauma paediatric operating theatres. Sharon has specialised as an infectious disease nurse working in a specialised unit whilst further specialising in TB and HIV.



Her non-conforming application of simulation as a method has helped generate new systems of care, identified how care is perceived, tested new policies and interventions, and informed decision-making, all whilst engaging stakeholders not usually involved in such processes (patients, public, lay members). She has developed surgical team training based on empirically evidenced communication models and developed innovative simulated manikins with artists and industry-partners. She was part of the Imperial College's Centre for Engagement and Simulation Science's pioneering research on sequential (care pathway-based simulations) and distributed (low cost, portable simulation equipment) simulation. This work has received funding from notable funders such as the Economic and Social Research Council, the Wellcome Trust, and the Arts and Humanities Research Council and won several national and international awards. Her body of work in relation to simulation challenges the wider industry fixation upon concepts such as fidelity and its relevance, questioning the established knowledge and its important in generation change and impact.

She has drawn on her research and knowledge of the field to develop a unique Masters programme in Inter-professional Healthcare Simulation. Alongside this, she has developed team communication train-the-trainer packages based on her empirical research of communication in operation theatres. This research received global acclaim for its identification of the affect that music playing, non-vocal responses and positioning has on communication amongst teams. This resulting training package has been used in both the UK and USA to train surgical teams and has changed policies around the playing of music during surgical procedures.

## Jane Roome

Dr Jane Roome is one of the GP Associate Deans for Kent, Surrey and Sussex Primary Care School. Jane has been a GP in West Kent for over 20 years. She is also the Locality Training Hub Lead and one of the GP Tutors for West Kent. Over the last seven years, she has developed an interest and expertise in simulation based practice and how this might be utilised to support the development of primary care staff. She created and leads the KSS Primary Care Simulation Faculty, consisting of over 40 educators from eight different healthcare roles within primary care in the KSS region. She is the first GP to be appointed as an Executive Committee member of the Association of Simulated Practice in Healthcare (ASPiH) and chairs the oversight committee for the 20 Special Interest Groups.



Jane is a core member of the teaching team for the Kent, Surrey and Sussex GP Clinical Supervisor and Educational Supervisor programmes, which lead to the Postgraduate Certificate in Strategic Leadership and Multiprofessional Education in Healthcare. She designs and delivers a wide range of simulation-based educational activities with the KSS Primary Care Simulation Faculty. Her work includes an in-situ anaphylaxis programme for COVID vaccination hubs, shortlisted for Primary Care Initiative of the Year at the 2021 Health Service Journal Patient Safety Awards. In 2025, the in-situ medical emergencies programme received a high commendation in the Urgent and Emergency Care category and was shortlisted for the Patient Safety Education and Training award. Jane has a strong interest in faculty development and supporting others to deliver high-quality simulation.

She has facilitated NHS England Becoming Simulation Faculty workshops and co-authored the e-Learning for Healthcare module on working with simulated participants. At a national level she curated the Medical Emergencies in General Practice module for Structured Learning Placements for GP Registrars and contributed to a Dynamic Learning Environment pilot. Jane regularly presents and facilitates workshops at regional and national simulation events and was a faculty member at the inaugural ASPiH India conference in 2025.

In January 2026, Jane was appointed Primary Care Simulation Development Lead at Kent and Medway Medical School in Canterbury. In this role, she is leading the continued development of the primary care simulation programme, with a particular focus on expanding placement capacity and enhancing interprofessional learning opportunities.



## Jackie Knight

Dr Jackie Knight PhD is an Associate Professor and Senior Fellow of the Higher Education Academy, contributing to multi-professional education and leadership development at Brighton and Sussex Medical School in partnership with NHS England (SE-KSS). She has held a lead role in the development of multi-professional fellowship programmes, supporting workforce capability and system-wide improvement across the South East region.

Jackie specialises in the management of change, with a particular focus on improving organisational performance through workforce development, sustainable service planning, and delivery through people. Her doctoral work developed a theoretical change management framework, which underpins her approach to complex organisational transformation and leadership practice. She has extensive experience working with clinicians across all levels of the NHS, including board and senior leadership teams, through development programmes, facilitation, and executive coaching. Drawing on her practice as a mental health practitioner, she adopts a systems-informed and relational perspective on leadership and organisational change.

Her career spans senior roles including Director of Mental Health Development, Head of Mental Health and Organisational Development, and National Development Consultant for Primary Mental Health Care (NIMHE, South East). She has also held Erasmus and international leadership roles, delivering large-scale change initiatives across local, national, and international healthcare systems.



## Rosie Courtney

Rosie Courtney's career started in Whitehall; first in the Cabinet Office during the Tony Blair era and subsequently for the Department of Health working in policy and then as Sir David Nicholson's private secretary. She moved to the NHS in 2010 and spent five years as the General Manager of the Royal Alexandra Children's Hospital and Trevor Mann baby unit. She went on to take on a number of roles both regionally and nationally in Health Education England, whilst leading on patient safety. She now works for NHS England as the Senior Workforce Specialist for Simulation and Patient Safety, in the Southeast Workforce Training and Education Directorate.



## Helen Higham

Helen is an Associate Professor in the Nuffield Department of Clinical Neurosciences at the University of Oxford, a Consultant Anaesthetist at the Oxford University Hospitals NHS Foundation Trust and Associate Dean for Simulation and Patient Safety at NHSE-Thames Valley.

She is the Director of OxSTaR, the University of Oxford's simulation and patient safety research centre: [www.oxstar.ox.ac.uk](http://www.oxstar.ox.ac.uk). Helen has led and supported many safety incident investigations in the NHS and has delivered national training programmes in systems-based incident investigation.

Her research interests include human factors and simulation-based education in healthcare with current projects focused on system based approaches to safety in primary care, human factors in low to middle income healthcare settings and the use of virtual reality to train healthcare professionals.



### **Graham Knight (The Conference Zone)**

Graham is an educationalist and visiting lecturer at postgraduate level at a number of medical schools including University of Oxford (“Becoming a Clinical Educator”) and Brighton and Sussex Medical School (“Effective Clinical Communication”).

He also supports the delivery of OxSTaR “Human Factors” courses and the Thames Valley PGVLE from a technology enabled learning (TEL) perspective. He leads a number of NHS transformation work streams and recently project managed the development of a new outpatient pharmacy at University Hospitals Sussex NHS Foundation Trust.



### **Andy Buttery**

Andy Buttery is Simulation Commercialisation Co-Lead at the University of Greenwich, and, for over 20 years served on national executives for ASPIH – The Association for Simulated Practice in Healthcare and on the board of the Association of Operating Department Practice during the process of joining the Health & Care Professions Council, and for SESAM – The European Simulation Society.

He has made significant contributions to simulation faculty development, simulation course design, and simulation for Human Factors in healthcare. He led the highly respected Simulation & Human Factors Regional Project for Kent, Surrey, & Sussex and is an enthusiastic supporter of healthcare simulation development, Transformative Simulation, co-production, and collaborative communities of practice.



### **Paul Wilder**

Paul Wilder is the Interim Technology Enhanced Learning lead for Frimley Health Foundation Trust, which includes running their Online Learning Portal and educational attendance tracking system, as well as implementing new TEL projects. He also manages the simulation suite at Frimley Park Hospital, overseeing a team of simulation technicians. With nearly fifteen years experience in the role he is well known and has presented at many simulation and TEL regional meetings and conferences, as well as having served on a previous SimNet committee.

Paul is an enthusiastic advocate for the practical cost-effective leveraging of current and emerging educational technology in NHS settings, and is an ASPIH Regional Tech Champion for the South. As a champion he fully supports its key purpose of improving engagement, networking and professional development of Skills and Simulation Technicians across the UK and beyond.



### **Matthew Williams**

Matt is a consultant in intensive care medicine and anaesthetics at Portsmouth Hospitals University NHS Trust. Originally from Northern Ireland, his training included working in the Southwest and Wessex regions of England with periods in Melbourne, Australia and Michigan, USA. Matt has been an Associate Dean for the Wessex Deanery since 2021. His portfolio includes simulation & TEL, patient safety, and quality improvement.

He has had a career long interest in medical education, achieving a post-graduate qualification and expertise in simulation training. He has held various educational leadership roles including Faculty Tutor, Wessex Regional Advisor (RA), and Trust Clinical Lead for Simulation (2011-2021). In 2020, he became the Faculty of ICM's Lead RA and the Implementation Lead for the 2021 curriculum, in which roles he attended the FICM Training, Assessment and Quality (TAQ) committee. In 2022, he was elected to the FICM Board for whom he chaired the Careers, Recruitment and Workforce committee from 2022 until 2025 when he was elected Vice-Dean.

As AD, Matt has helped facilitate some key developments for the Wessex Deanery, alongside collaborative efforts with colleagues across the South East. These have included the re-establishment of simulation fellows who have helped ensure curricula driven simulation training is delivered, a programme to deliver point of care ultrasound training for acute specialties, and a consistent delivery of faculty development training.

He's looking forward to another SimNet event to network and celebrate the great work being done across the South East, an area of the UK managing to keep the beacon of simulation & TEL shining! Thank you to the team at BSMS for bringing it together.

### **Lyndsay Habberfield**



Lyndsay Habberfield is the Clinical Lead for post Registration Nursing at University Hospitals Sussex, with a background of Critical Care Outreach and special interest in deterioration and acute care simulation skills. She has designed and leads a Deteriorating Patient Blended Learning Course which blends online learning with Immersive Simulation and face to face high fidelity Simulation. She is also the Module Lead at Brighton and Sussex Medical School (BSMS) for MDM149 Feedback and Debriefing in Simulation.

### **Robyn Stiger**



Robyn is a principal lecturer and the strategic lead for clinical skills, simulation and immersive technology at Oxford Brookes University. She leads a diverse team of academics and technicians, with responsibility for developing and embedding simulation and immersive technology across the health care programmes within the faculty of Health Science and Technology, as well as contributing to innovative and collaborative outputs with Oxford University and local NHS partner Trusts.

## The Conference Zone Room G 22



The Conference Zone is an immersive, online, interactive conference facility that enables learning for universities, and healthcare organisations. We also support the development of virtual reality (VR) and augmented reality (AR) simulation tools, and support the delivery of technology-enabled learning for universities, and healthcare organisations.

## Scotia UK plc Table 2



We are looking forward to meeting our friends old and new at University of Sussex, Falmer. Latest smots™ Session Manager Scheduler with Assessment Software is available now. smots™ 4K mobile trolley, inSitu and ePTZ Wider cameras are also on show, as is the smots™ ProTalkback system. Of course we are always keen to hear what you have been up to in the last year so please come and say hello!

More on everything we do at: [www.smots.org](http://www.smots.org)



## Adam Rouilly Table 10



Based in Kent, Adam Rouilly is a manufacturer and supplier of Clinical Skills Simulators, Anatomical Models and Charts. For nearly 107 years, healthcare professionals and students worldwide have used our teaching aids in simulation-based training. Our range encompasses many learning objectives and we are pleased to demonstrate some exciting new products at this year's SimNet. Key skills such as understanding detailed anatomy, ultrasound skills, auscultation and patient vitals, nasogastric feeding and catheterisation enhances our already comprehensive range. Adam Rouilly prides itself in ensuring that its customers have the information and support to purchase the right products for their training needs.

## iRis Table 5



The iRIS Scenario Design and Management System has been developed and evolved to accelerate the development of competence, confidence and resilience of healthcare students and professionals. This is achieved by significantly reducing the cost and increasing the quality of the design, delivery, and management of simulated practice. iRIS is the only cloud-based, interoperable, AI-powered platform that can achieve this. It is widely used by universities and Teaching Hospitals in the UK.

## Medical Simulation Solutions Table 9



Led by a team full of enthusiasm and commitment, Medical Simulation Solutions brings over 25 years of invaluable experience in simulation. Their expertise in the sales and servicing of Gaumard patient simulators guarantees access to the finest resources in the sector.

Both Gaumard and Medical Simulation Solutions are dedicated to enhancing your experience, promising an unmatched purchasing journey supplemented by comprehensive training services. This collaboration aims to support your success, providing the essential tools and knowledge for you to thrive.

Our aim is to have exceptionally well trained medical/nursing staff that can deal with any situation effectively and efficiently, which ultimately results in better outcomes for patients.

Our goal is to supply reliable products with well-trained end users and exceptional after-sales service.  
[www.medsimsol.co.uk](http://www.medsimsol.co.uk)

**Limbs & Things**  
**Table 7**

**limbs&  
things**



Limbs & Things produce intuitive training tools that build medical mastery from first skills to clinical complexity. Collaborating with healthcare professionals from design through to production, the company engineers evidence-backed simulation that work seamlessly to instill confidence in every hand.

**3B Scientific**  
**Table 4**



**3bscientific.com**

3B Scientific was founded in 1948 in Hamburg, Germany and has grown to be one of the world's leading manufacturers of Medical and Science Education solutions. The product portfolio covers a complete and comprehensive range of equipment for simulation and skill training, anatomy, healthcare and patient education, and is continuously updated with new products and innovations.

Represented in over 120 countries worldwide, the brand name 3B Scientific® stands for best quality, best value, and best service. The mission of 3B Scientific is to advance medical and healthcare delivery through the quality, breadth and global reach of relevant educational and simulation products.

**Sim & Skills**  
**Table 3**



Sim & Skills is one of the leading providers of Healthcare Simulation equipment and clinical skills trainers in the UK. With over 40 years combined clinical and educational experience, our knowledgeable team offers advice to help find you the best solutions.

We work with world-leading suppliers to ensure we offer the widest range of innovative products. Our mission is to make healthcare education accessible, affordable and enjoyable. We are committed to improving patient safety by offering realistic and cost-effective solutions, matched to your needs.

**Oxford Medical Simulation**  
**Table 8**



Oxford Medical Simulation (OMS) is transforming healthcare education, training and assessment. Using cutting-edge VR, AI, and advanced performance analytics, we standardise training, support the transition to practice, and assure competency. Accessible anytime, anywhere, and trusted by leading organisations worldwide, we empower you to drive excellence in patient care and safety.





# Rockinghorse Children's Charity

Rockinghorse is your local children's hospital charity and the official fundraising arm of the Royal Alexandra Children's Hospital in Brighton. We fund and deliver life-saving equipment, specialist projects and enhanced services for sick babies, children and young people throughout Sussex.

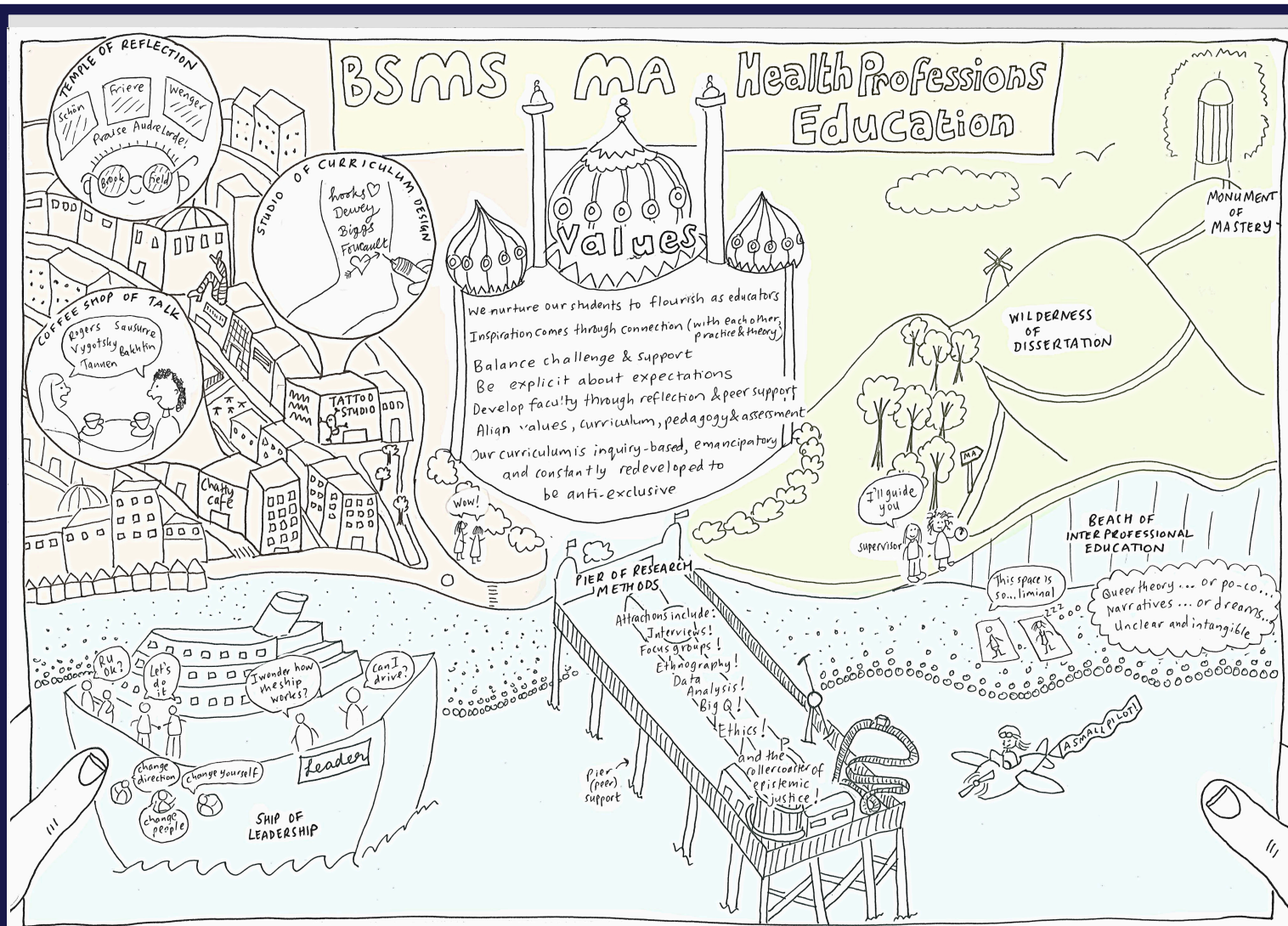
Working hand in hand with healthcare professionals we fund and deliver projects that directly support more than 190,000 children every year.

To find out how we can help, scan this code or visit [www.rockinghorse.org.uk](http://www.rockinghorse.org.uk)

**Find out  
more about  
us here:**



Registered charity no: 1018759



## Postgraduate Medical Education

This course aims to enthuse and inspire educators across all health professions. Through guided critical reflection on practice, the course will enable students to teach and supervise learners in the health professions in line with their moral and professional values.

If you are part of a multi-disciplinary team of educators involved in the education of any healthcare professionals, then this is the course for you. As well as catering for all healthcare professions, our course is unique in its emphasis on:

- Digital learning
- Decolonising and inclusivity
- Creative methods of teaching and research
- Career progression and opportunities in Health Professions Education
- Peer support

[bsms.ac.uk/postgraduate/medical-education](https://bsms.ac.uk/postgraduate/medical-education)



# Develop specialist knowledge and expertise to further your career



## Postgraduate study at Brighton and Sussex Medical School

- A wide range of courses relevant to medicine and healthcare
  - From single CPD modules and workshops to Masters level
- Part-time study opportunities compatible with clinical practice
- Alumni scholarships available to BSMS, University of Sussex and University of Brighton graduates

Find out more: [bsms.ac.uk/postgraduate](https://bsms.ac.uk/postgraduate)



 brighton and sussex  
medical school