

Are you a woman aged 40-65 years?

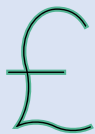
Do you live in Brighton, Hastings, or Eastbourne?



We would like to know your views on **Women's Health and Wellbeing Services**, including menopause care, infection testing, cervical and breast screening, contraception, sexual dysfunction care, incontinence services



**WHO?** Everybody who self-identifies as a woman aged 40-65 years who lives in East Sussex is invited to take part



To thank you for your time we will give you a **£25 High street voucher** for participating



Talk in a focus group, or one-to-one with a researcher. Online or in person – **you choose!**

**Interested?** Please contact [Kiersten.simmons@nhs.net](mailto:Kiersten.simmons@nhs.net)

(Or ask reception to email)

Twitter: @KJGSimmons

Phone: 01273-696-955

ext.63082

Text: 07955356974

Study webpage:  
<http://www.bsms.ac.uk/POWER>



Scan for more info



University Hospitals Sussex  
NHS Foundation Trust

 brighton and sussex  
medical school

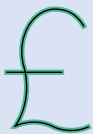
Are you a woman/ trans  
feminine person aged  
40-65 years?  
Do you live in Brighton,  
Hastings, or Eastbourne?



We want to know your views on **Women's Health and Wellbeing Services**, including menopause care, infection testing, cervical and breast screening, sexual dysfunction care, incontinence services.



**WHO?** Everybody who **self-identifies** as a woman aged **40-65 years** who lives in **East Sussex** is invited to take part



To thank you for your time we will give you a **£25 High street voucher** for participating



Talk in a focus group with other women, or one-to-one with a researcher. Online or in person – **you choose!**

**Interested?** Please contact  
[Kiersten.simmons@nhs.net](mailto:Kiersten.simmons@nhs.net)

(Or ask reception to email)

Twitter: @KJGSimmons

Phone: 01273-696-955

ext.63082

Text: 07955356974

Study webpage:

<http://www.bsms.ac.uk/POWER>



Scan for more info

**NHS**

University Hospitals Sussex  
NHS Foundation Trust

 **brighton and sussex  
medical school**

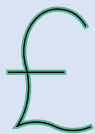
Are you a woman aged  
40-65 years?  
Do you live in  
Brighton, Hastings, or  
Eastbourne?



**We want to know your views on Women's Health and Wellbeing Services**, including menopause care, infection testing, cervical and breast screening, contraception, sexual dysfunction care, incontinence services



**WHO?** Everybody who self-identifies as a woman aged 40-65 years who lives in East Sussex is invited to take part



To thank you for your time we will give you a **£25 High street voucher** for participating



Talk in a focus group, or one-to-one with a researcher. Online or in person – **you choose!**

**Interested?** Please contact  
[Kiersten.simmons@nhs.net](mailto:Kiersten.simmons@nhs.net)

(Or ask reception to email)

Twitter: @KJGSimmons

Phone: 01273-696-955  
ext.63082

Text: 07955356974

Study webpage:  
<http://www.bsms.ac.uk/POWER>



Scan for more info

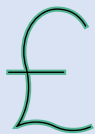
Are you a woman who identifies as belonging to an ethnic minority? Are you aged 40-65 years? Do you live in Brighton, Hastings, or Eastbourne?



**We want to know your views on Women's Health and Wellbeing Services**, including menopause care, infection testing, cervical and breast screening, contraception, sexual dysfunction care, incontinence services



**WHO?** Everybody who self-identifies as a woman aged 40-65 years who lives in East Sussex is invited to take part



To thank you for your time we will give you a **£25 High street voucher** for participating



Talk in a focus group, or one-to-one with a researcher. Online or in person – **you choose!**

**Interested?** Please contact [Kiersten.simmons@nhs.net](mailto:Kiersten.simmons@nhs.net)

(Or ask reception to email)

Twitter: @KJGSimmons

Phone: 01273-696-955  
ext.63082

Text: 07955356974

Study webpage:  
<http://www.bsms.ac.uk/POWER>



Scan for more info

Are you a woman aged  
40-65 years?  
Do you live in Brighton,  
Hastings, or Eastbourne?

Can you help us with research  
**exploring your views on Women's  
Health and Wellbeing Services**,  
including menopause care, infection  
testing, cervical and breast  
screening, contraception, sexual  
dysfunction care, incontinence  
services, for Women aged 40-65  
years in East Sussex?

To express interest please send your  
name and contact details to:

[Kiersten.simmons@nhs.net](mailto:Kiersten.simmons@nhs.net)

(Or ask reception to email)

Or Twitter: @KJGSimmons

Or Phone: 01273-696-955 ext.63082

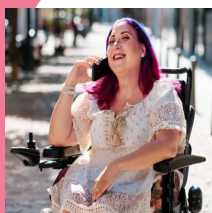
Or Text: 07955356974

*For more information:*

Study webpage:

<http://www.bsms.ac.uk/POWER>

Or follow the QR code:



**NHS**  
University Hospitals Sussex  
NHS Foundation Trust

**WHAT?** Focus Groups  
or Personal Interviews  
(you choose)

**WHO?** Everybody who  
self-identifies as a  
woman aged 40-65  
years who lives in East  
Sussex is invited to  
take part

**WHERE?** Convenient  
local location or safe  
online forum

**WHAT'S IN IT FOR  
YOU?** Involvement in  
research focused on  
improving NHS  
services and £25 High  
street voucher



 brighton and sussex  
medical school



Are you a community/ NGO/ charity/  
council worker?

Do you provide or signpost women  
aged 40-65 years to health or  
wellbeing care?

Do you work in Brighton, Hastings,  
or Eastbourne?

## We want to know your views on Women's Health and Wellbeing

**Services**, including menopause care, infection testing, cervical and breast screening, contraception, sexual dysfunction care, incontinence services



WHO? Community, NGO, Charity and  
Council Workers who provide or signpost  
women aged 40-65 years to Women's  
Health and Wellbeing services



To thank you for your time we  
will give you a **£25 High street  
voucher** for participating



One hour interview with a  
researcher. Online or in person –  
**you choose!**

**Interested?** Please contact  
[Kiersten.simmons@nhs.net](mailto:Kiersten.simmons@nhs.net)

(Or ask reception to email)

Twitter: @KJGSimmons

Phone: 01273-696-955

ext.63082

Text: 07955356974

Study webpage:

<http://www.bsms.ac.uk/POWER>



Scan for more info

Are you a Community, NGO, Charity, or Council Worker?



Can you help us with research exploring your views on **Women's Health and Wellbeing Services**, including menopause care, STI/HIV testing, cervical and breast screening, contraception, sexual dysfunction care, and incontinence services for **Women aged 40-65 years** in East Sussex?

To express interest please send your name and contact details to:

[Kiersten.simmons@nhs.net](mailto:Kiersten.simmons@nhs.net)

(Or ask reception to email)

Or Twitter: @KJGSimmons

Or Phone: 01273-696-955 ext.63082

Or Text: 07955356974

*For more information:*

Study webpage:

<http://www.bsms.ac.uk/POWER>

Or follow the QR code:



**WHO?** Community, NGO, and Charity Workers who provide or signpost women aged 40-65 years to Women's Health and Wellbeing services

**WHAT?** Personal Interviews

**WHERE?** Convenient local location or safe online forum (Microsoft Teams)

**WHAT'S IN IT FOR YOU?** Involvement in research focused on improving NHS services. £25 High Street voucher to compensate you for time and travel

Are you a Health or Social Care Professional or a Commissioner of Services?

Do you provide or signpost women aged 40-65 years to health or wellbeing care?

Do you work in Brighton, Hastings, or Eastbourne?



## We want to know your views on Women's Health and Wellbeing

**Services**, including menopause care, infection testing, cervical and breast screening, contraception, sexual dysfunction care, incontinence services



WHO? Primary and Secondary Health (from all different specialties) and Social Care Professionals, Commissioners who provide or signpost women aged 40-65 years to Women's Health and Wellbeing services

**Interested?** Please contact [Kiersten.simmons@nhs.net](mailto:Kiersten.simmons@nhs.net)

(Or ask reception to email)

Twitter: @KJGSimmons

Phone: 01273-696-955  
ext.63082

Text: 07955356974

Study webpage:  
<http://www.bsms.ac.uk/POWER>



Scan for more info



One hour interview with a researcher. Online or in person – **you choose!**





Are you a Health or Social Care Professional or a Commissioner of Services?

Can you help us with research exploring your views on **Women's Health and Wellbeing Services**, including menopause care, STI/HIV testing, cervical and breast screening, contraception, sexual dysfunction care, and incontinence services for **Women aged 40-65 years** in East Sussex?

To express interest please send your name and contact details to:

[Kiersten.simmons@nhs.net](mailto:Kiersten.simmons@nhs.net)

(Or ask reception to email)

Or Twitter: @KJGSimmons

Or Phone: 01273-696-955 ext.63082

Or Text: 07955356974

*For more information:*

Study webpage:

<http://www.bsms.ac.uk/POWER>

Or follow the QR code:



### **WHO DO WE NEED?**

Primary and Secondary Health (from all different specialties) and Social Care Professionals, Commissioners who provide or signpost women aged 40-65 years to Women's Health and Wellbeing services

**WHAT?** Personal Interviews

**WHERE?** Convenient local location or safe online forum (Microsoft Teams)

**WHAT'S IN IT FOR YOU?** Involvement in research focused on improving NHS services. Certificate of thanks for Continuing Professional Development.

