

Joint Clinical Research Office

One-stop-shop for health and care research studies

What is the Joint Clinical Research Office (JCRO)?

Established in 2019, the JCRO is a partnership between The University of Sussex, The University of Brighton, University Hospitals Sussex NHS Foundation Trust and Sussex Partnership NHS Foundation Trust.

The JCRO functions as a **'one-stop-shop' for health and care research studies** involving one of the partner Universities and any NHS Trust or care setting.

It brings together expertise across partner organisations and, through management and advice, supports the study through the research lifecycle.



What does the JCRO do?

The JCRO supports health and care research studies where the Chief, Principal or Co-Investigator are employed by one of the partner organisations and where the project involves NHS resources (e.g. NHS patients, data, staff or resources) or care resources (e.g. local authorities, care homes, residential homes).

The JCRO provides specialist health and care research management support across the research lifecycle (*PTO for more info*).



JCRO Team pictured left to right: Yvette Wagner, Debbie Coton, Sam Suter, Zoe Boylan (Virginia Govoni and Anett Kiss not pictured)

How we make a difference

The JCRO has been instrumental in bringing partners together to establish successful joint practices. It has helped to streamline and enhance grant applications, contracting, finance and governance for health and care research studies.

JCRO also developed the Pre-Sponsorship Review Panel, bringing expertise from partners to improve the quality of all applications for Sponsorship for the four partner organisations.

Sussex Health and Care Research Partnership (SHCRP)

The JCRO is part of the SHCRP which is an exciting initiative bringing together health and care research partners across Sussex to develop opportunities for shared research infrastructure, capacity building and collaboration to ensure each partner organisation realises their research ambitions.

Who we work with

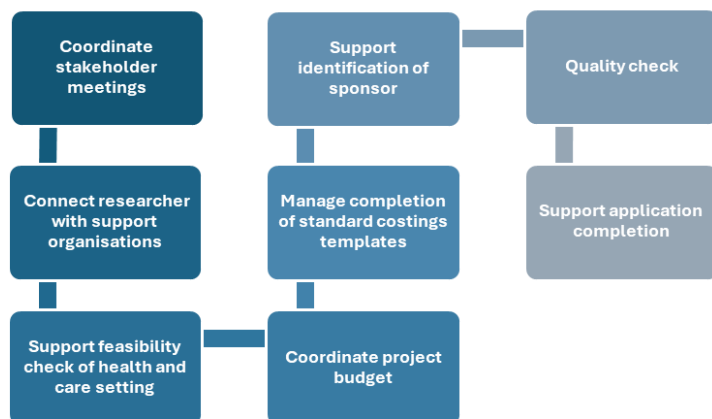
In collaboration with our partners, JCRO works closely with the Brighton and Sussex Clinical Trials Unit, the NIHR Research Support Service and the South East Regional NIHR Research Delivery Network.

Joint Clinical Research Office

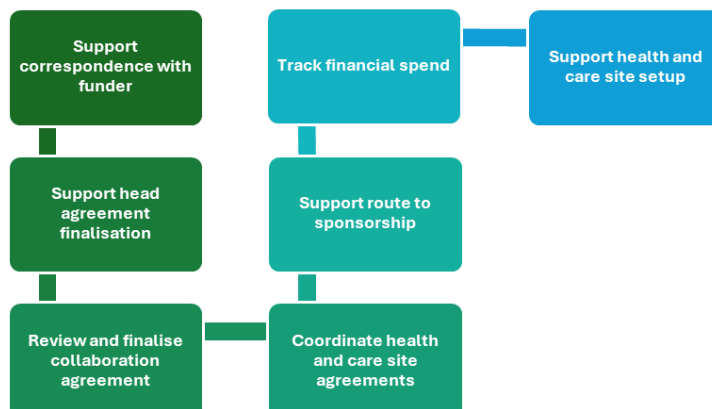
One-stop-shop for health and care research studies

How JCRO can help?

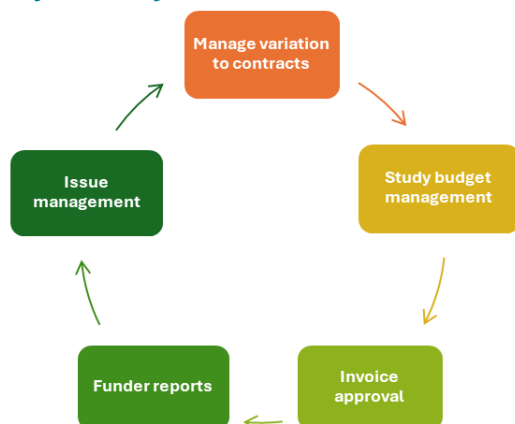
1. Grant application



2. Study setup



3. Study delivery



Feedback from researchers:

“The professional and responsive JCRO support has made my research activities enjoyable and very productive. I felt supported 100% by their excellent team.”

“I really wondered what the JCRO would offer as there are so many different processes, but they added essential skills and different components to the grant application process.”

“The JCRO were on hand to deal with liaising between ourselves and our funders and provided a lot of assistance with the service level agreement.”

“I was so well supported, huge help navigating something that for me was very new and complex. Communication was always clear, also had great clarity of what needed to happen and when.”

Get in touch

If you would like to discuss your research plans further with one of the JCRO advisors, please get in touch and we can arrange an initial discussion with you, to consider potential pathways and funders.

Please get in touch by emailing:
jcro@sussex.ac.uk